



H1N1

Current Arizona Status

Steve Bold – Manager
State Continuity of Operations Programs Group
Division of Emergency Management
Department of Emergency and Military Affairs



Agency Framework Planing Preparing for H1N1

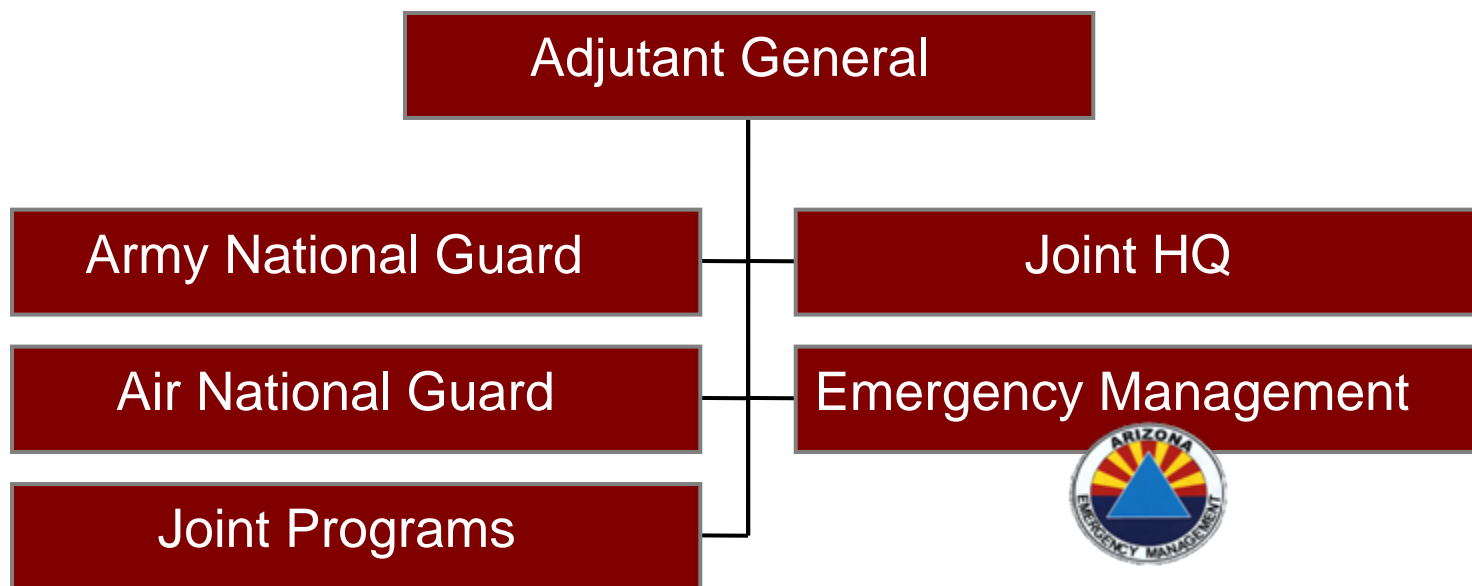
Department of Emergency & Military Affairs
Division of Emergency Management
State COOP Group

State Emergency Response & Recovery Plan
Primary & Secondary Agencies' COOPlans

H1N1 Preparedness
Stakeholders

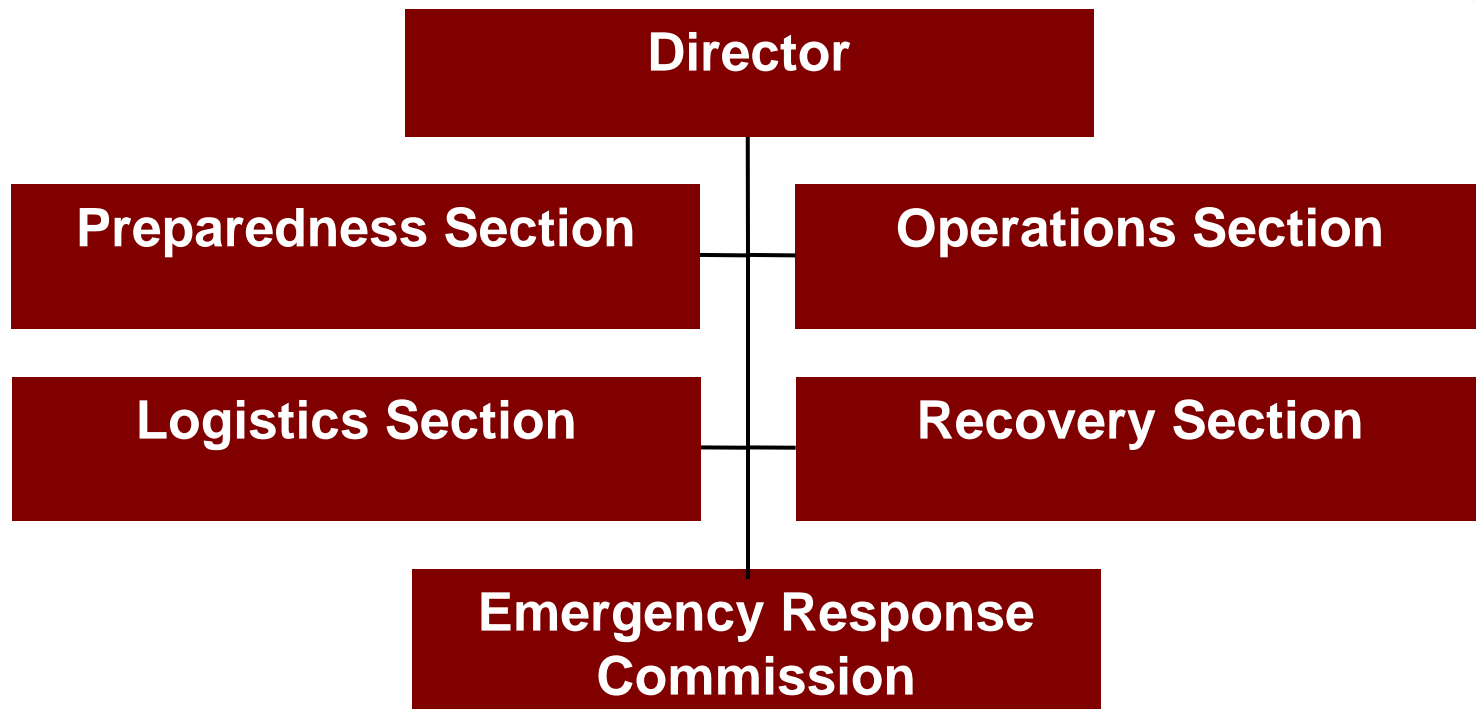


Department of Emergency & Military Affairs (Agency Framework)





Division of Emergency Management (Agency Framework)





Stakeholders in Emergency Management

Families

Communities

Volunteer Agencies

Business/Industry

Cities/Towns

Counties

Tribes

State

Nation

Inter-National



SERRP & COOP (Planning)



**State Emergency Response & Recovery Plan
Supports a Statewide Incident**

**Agency Continuity Of Operations Plans
Supports the Essential Functions**



State Emergency Response & Recovery Plan (Planning)



Base Plan

Describes the overarching structure comprising a statewide approach to incident management

Emergency Support Functions (ESFs)

Structures and responsibilities for coordinating incident resource support

ESF Appendices

Functions, guidelines, supporting documentation to SERRP Annexes

Incident Annexes

Address contingency or hazard situations requiring specialized application of the SERRP

Support Annexes

Provide guidance and describe the functional processes and administrative requirements necessary to ensure effective SERRP incident management objectives



Emergency Support Functions

(Planning)



- ESF #1 – Transportation and Infrastructure
- ESF #2 – Communications
- ESF #3 – Public Works and Engineering
- ESF #4 – Fire Services
- ESF #5 – Emergency Management
- ESF #6 – Mass Care, Housing and Human Services
- ESF #7 – Resource Support
- ESF #8 – Health and Medical
- ESF #9 – Urban Search and Rescue
- ESF #10 – Oil and Hazardous Materials Response
- ESF #11 – Agriculture and Natural Resources
- ESF #12 – Energy
- ESF #13 – Public Safety and Security
- ESF #14 – Recovery and Mitigation
- ESF #15 – External Affairs



Support & Incident Annexes (Planning)



Support Annex

- Donations Management
- Financial Management
- Logistics Management
- Private Sector
- Occupational Safety and Health
- Tribal Affairs
- Volunteer Management

Incident Annex

- Biological Incident
- Catastrophic Incident
- Cyber Incident
- Drought Incident
- Nuclear/Radiological Incident
- Terrorism Incident Law Enforcement & Investigation



Continuity of Operations Plans (Planning)



Continuity of Operations Plans

Allows the Agency to Respond to the SERRP

Provides for the Recovery Essential Functions

Based on Best Practices

Identifies Dependencies



Continuity of Operations Plans (Planning)



Essential Functions
Orders of Succession
Delegation of Authority
Continuity of Facilities
Continuity of Communications
Vital Records Management
Human Capital
Testing, Training and Exercising
Devolution of Control and Direction
Reconstruction Operations



H1N1 Preparedness

Understanding

- State Emergency Response & Recovery Plan
- Public Health Plans and Planning
- Agency Operations and Dependencies

Education

- Incident Command System
- Pandemic Planning
- Information Resources

Action

- COOP Update/Development
- Testing & Training



H1N1 Preparedness



Public/Private Partnership

Websites:

FEMA Emergency Management Institute

<http://training.fema.gov/IS/crslist.asp>

Flu Information for Professionals

<http://pandemicflu.gov/professional/index.html>



H1N1 Preparedness



Contact Information:

Steve Bold

602-464-6204

Steven.bold@azdema.gov

Questions?